

ENVI 5 Service Pack 1

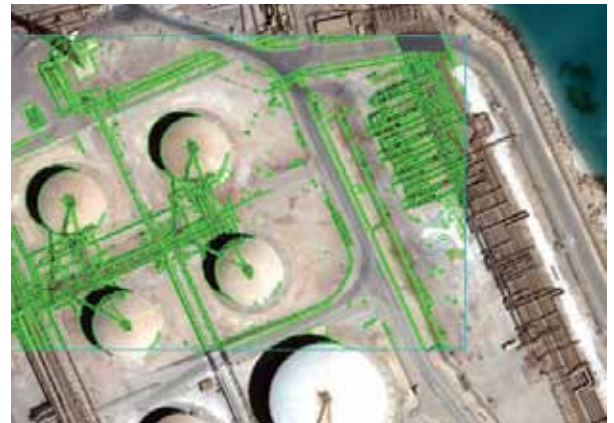
EXELIS

Visual Information Solutions

Exelis Visual Information Solutions is committed to delivering the latest technology to our ENVI® customers as quickly as possible. To achieve this goal, we periodically release ENVI Service Packs, which are delivered to our customers between major ENVI releases. ENVI Service Packs include support for more data types, functional improvements, and bug fixes to help you get the information you need from your geospatial imagery. In this latest release you will find updates to the High Performance Display Engine and the Layer Manager capabilities as well as improvements to both User Interface and ENVI's advanced data support.

HIGH-PERFORMANCE DISPLAY

- The display of Preview Windows is faster in all workflows. The Preview Window pans seamlessly across image tile boundaries.
- Workflows retain enabled/disabled state of Preview Window when moving back and forth between steps.
- JPEG2000 files load faster and do not require pyramid generation for display.



USER INTERFACE

- You can create a pixel link and zoom link of multiple views. The Link Views dialog has been updated to allow multiple view sets. You can also link or unlink all views at once.
- A North arrow displays on all georeferenced data. A new North Arrow preference allows you to change the default functionality.
- Military Grid Reference System (MGRS) coordinates are displayed in the Cursor Value tool. A new preference was added to enable or disable this option.
- You can enter lower-case MGRS coordinates in the Go To tool.

ENVI 5 Service Pack 1

LAYER MANAGER ENHANCEMENTS

- You can view file metadata by right-clicking on a layer name in the Layer Manager or a dataset name in the Data Manager and selecting View Metadata. You can view detailed properties of rasters, vectors, annotations, etc. You can also export metadata to a text file.
- If a vector layer has an associated attribute table, you view, edit, and delete the table attributes. Right-click on the layer name in the Layer Manager and select View/Edit Attributes. You can add vector attribute columns to the Attribute Viewer table, and you can import attribute columns from other files.



ENVI PROGRAMMING

- The PixelLink method was added to the ENVI View object to let you perform pixel linking. The ENVIView object was also updated to include ZOOM_LINK and UPDATE_ZOOM_LINK keywords to allow zoom linking.
- You can write custom file readers to open data formats that are not directly supported by ENVI.

OTHER NEW AND ENHANCED FEATURES

- You can connect to Esri Image Services (including mosaic datasets) through the Remote Connection Manager or Open Remote Dataset dialog. This feature is supported on Windows-32 bit systems with an installation of ArcGIS® 10.
- You can open Pleiades Primary or Ortho (single or mosaic) data. Select a DIM*.XML (DIMAP V2) file to open the data. To open Pleiades DIMAP V1 format data, select the PHRDIMAP.XML file.
- Use the Raster Management > Save File As options in the Toolbox to save images to ArcView® raster, ASCII, ER Mapper, ERDAS IMAGINE, JPEG2000, and PCI image formats.



ENVI

Learn more about ENVI 5 SP1 at www.ittvis.com/ENVI, or call an ENVI representative today at 303.786.9900.