



ENVI® ONEBUTTON™

UTILIZE UAS AND AERIAL
DATA TO ENABLE BETTER
BUSINESS DECISIONS

HARRIS® TECHNOLOGY TO CONNECT,
INFORM AND PROTECT™

HarrisGeospatial.com

KEY FEATURES

Multispectral, multiband imagery support

Real-time progress, auto-save and recovery capability

Motion technologies produce exceptional 2D and 3D results

Utilizes GPU and multiple cores to deliver fast processing

ENVI ONEBUTTON PRODUCTS ARE EASY TO USE YET POWERFUL ENOUGH TO SUPPORT THE MOST ADVANCED GIS SOLUTIONS AND ADVANCED ANALYTICS.

ENVI® ONEBUTTON™

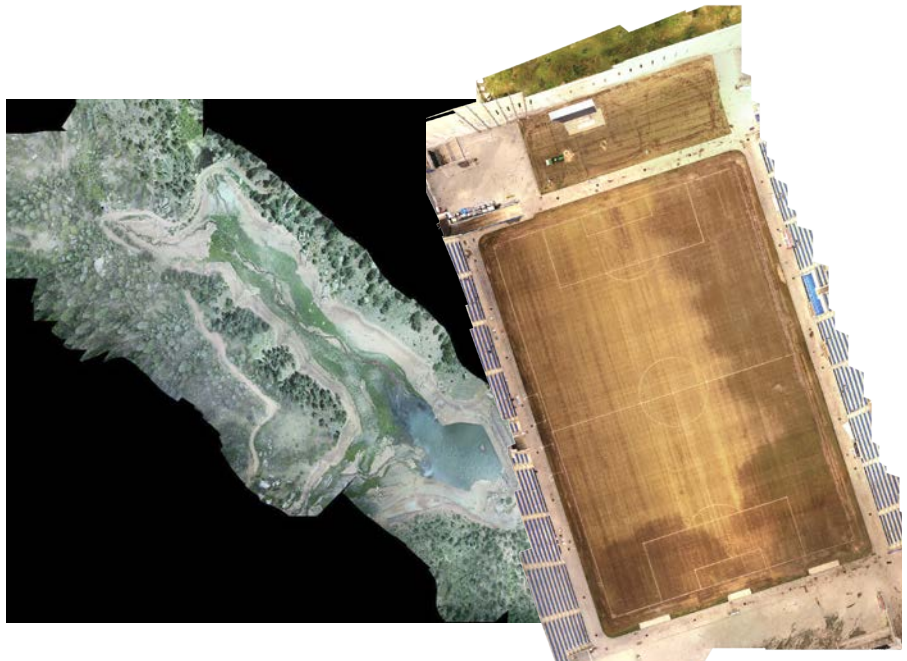
Explosive growth in the Unmanned Aircraft Systems (UAS) market, coupled with the evolution of inexpensive miniaturized sensors, has made aerial imagery easier and cheaper to acquire than ever before. Information from that imagery is commonly used to develop new applications, update GIS maps, and make better business decisions. All of this is driving the need for software tools that can speed up the time between image capture and decision making.

ENVI® OneButton™ software is by far the industries' easiest-to-use image processing software. By utilizing the most advanced photogrammetric and computer vision algorithms, ENVI OneButton lets you easily and automatically create fully georeferenced products in 2D and 3D while combining highly optimized performance to produce exceptionally fast and accurate results.

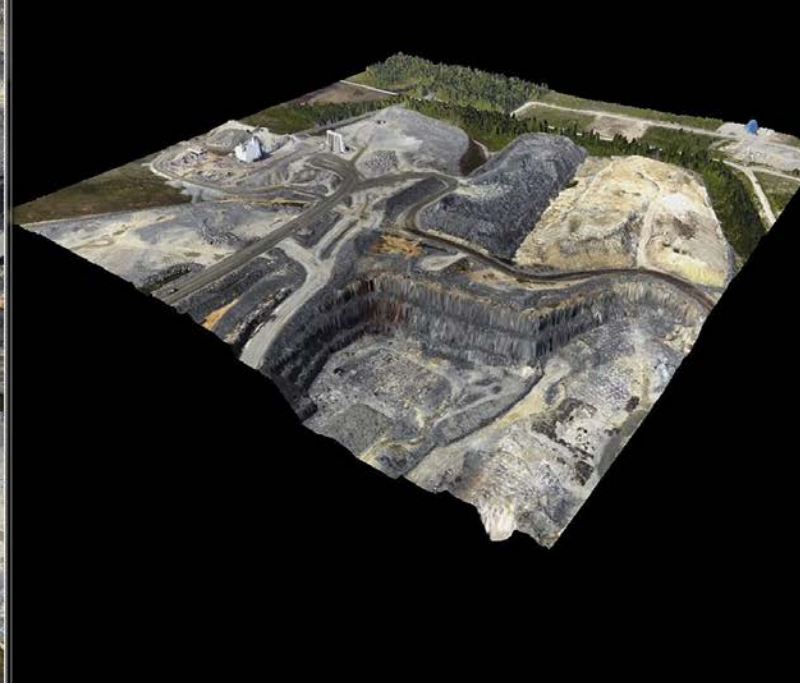
Outputs that can be produced from ENVI OneButton include orthomosaics, Digital Elevation Models (DEMs), true color 3D point clouds, orthorectified multispectral mosaics, and controlled oblique imagery, all of which can be further analyzed in ENVI software.

Processed, georeferenced and orthorectified imagery products are output in a form that can be automatically ingested into your GIS and analytics packages such as ENVI, supporting complex analytics for applications including precision agriculture, pipeline inspection, real estate visualization, construction and engineering projects, and many others.

Regardless of your experience, ENVI OneButton lets you immediately increase ROI and begin building exciting new applications. This dramatically lowers the cost of ongoing data collection and processing for existing applications.



Orthomosaics created from aerial imagery collected by DJI Phantom UAV. The stadium above took 6 minutes to process in 2cm GSD.



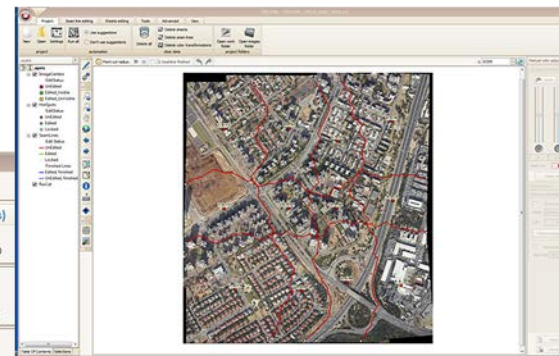
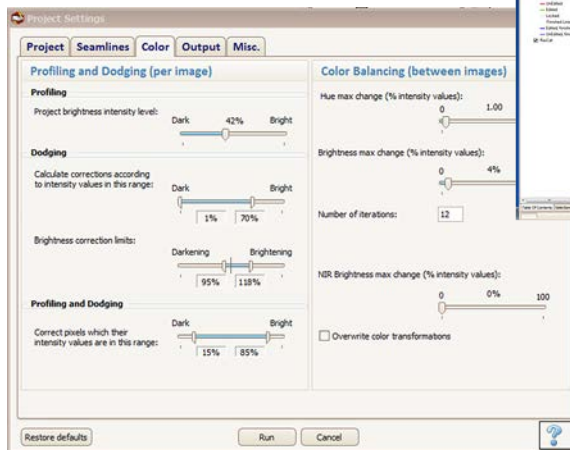
ENVI OneButton produces exceptionally accurate orthomosaics and DEMs.

MORE FEATURES

- An interactive multifunction control station to step through the photogrammetric process and refine all processing parameters on-the-fly
- Complete control over the aerial triangulation and bundle block solution process including tie point improvement, correspondence (matching) improvement, and filtering
- Complete control over DEM and 3D point cloud creation including model density and smoothing for approximated bare earth models and trade-offs between model quality and processing time
- Complete control over mosaicking including seamline placement, editing and feathering
- Facilities to divide large projects into tiles/sheets and combine multiple projects together to produce large orthomosaics, well into the tens of thousands of images, which can be color and tone balanced
- A fast geoclipboard that selects all the images taken in a specific geographic location, displays them, and lets you select an appropriate image to replace undesirable content in mosaics that may appear due to shadows, transient objects, or poor image quality. Also provides control over feathering of patches and after change recolor/tone balancing
- Management functions allow complete projects to be split across workstations and division of labor across projects



Thermal orthomosaic of a corporate campus showing pipes down to 2 meters underground.



Seamline editor lets you simply drag automatic seamlines to new locations to remove possible defects at edges. Refeathering, color/tone balance is adjustable.

BENEFITS

Increases ROI and lowers costs of data collection and processing

Ingests imagery products into your GIS and analytics packages such as ENVI

Supports complex analytics for precision agriculture, pipeline inspection, construction and engineering projects, and more

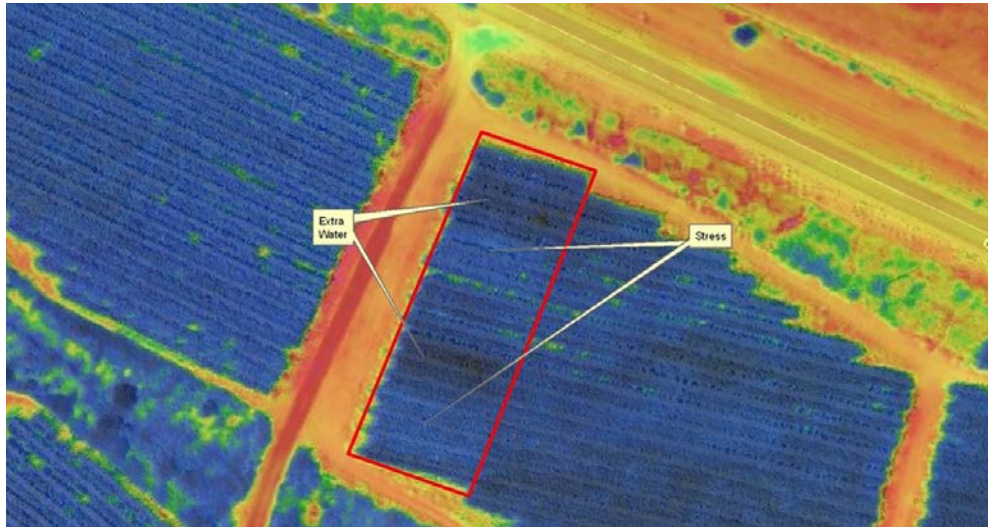


Orthomosaic of a residential housing subdivision shot from DJI Phantom. Total time to process was 49 minutes.

COMPUTING ENVIRONMENT REQUIREMENTS

ENVI OneButton Products Platform Support

Software	Hardware	Supported MS Windows Versions
ENVI® OneButton™	Minimum: 64 bit / 2-Core CPU 4GB RAM Optional: GPU: NVIDIA CUDA	Windows 7, 10
ENVI® OneButton™ Professional	Recommended: 6-Core CPU i7 or Dual Processor Xeon 32GB RAM GPU: NVIDIA CUDA	



Multispectral orthomosaic showing irrigation issues.

FOR MORE INFORMATION:

harrisgeospatial.com/onebutton

Email: geospatialinfo@harris.com

Phone: 303.786.9900

About Harris Corporation

Harris Corporation is a leading technology innovator, solving customers' toughest mission-critical challenges by providing solutions that connect, inform and protect. Harris supports government and commercial customers around the world. [Learn more at harris.com.](http://harris.com)

FLORIDA | NEW YORK | VIRGINIA | BRAZIL | UNITED KINGDOM | UAE | SINGAPORE

Non-Export-Controlled Information

Harris is a registered trademark of Harris Corporation. Trademarks and tradenames are the property of their respective companies.
© 2017 Harris Corporation 07/16 rev. 6-17 VIS-AL

HARRIS® TECHNOLOGY TO CONNECT,
INFORM AND PROTECT™