

MULTISOURCE
DATA

SRTM 30M
CORRECTED
with ASTER
elevation data

MULTISOURCE
DATA

KEY USER BENEFITS

- **IMMEDIATELY AVAILABLE**
Product available off-the-shelf, delivered on FTP or hard drive
- **PLUG-AND-PLAY PRODUCT**
Ready-to-use in your GIS solution or any other professional application
- **CUSTOMIZED DELIVERIES OF YOUR AREAS OF INTEREST**
From a few square kilometers to the global product
- **COST EFFECTIVE**
Affordable pricing with special packages for global and continental coverages

PLANETDEM 30 PLUS UNIQUE 30-METER GLOBAL ELEVATION PRODUCT

PlanetDEM 30 Plus is a reliable multi-source elevation product offering a global coverage at 30-meter resolution and providing seamless, reliable and accurate data, ready-to-use in all professional applications.

PlanetDEM 30 Plus overall accuracy is a major asset for a diverse range of applications, even the most sensitive. **PlanetDEM 30 Plus** is perfect for 3D modeling solutions, flight simulation, satellite imagery orthorectification, mapping production, GIS backdrops, both for civil and military purposes.

FEATURES

- » **Global:** full coverage of all Earth's landmass
- » **Seamless:** advanced seamless processing of all multi-source data
- » **Reliable:** fully enhanced version of SRTM 30m source data
- » **Accurate:** 30m resolution offering the required accuracy of DTED standards

Available in 2 resolutions: 30m (DTED2) and 90m (DTED1)

PlanetDEM 30 Plus global elevation product is the unique high quality alternative to SRTM data.

**USE PLANETDEM 30 PLUS ELEVATION PRODUCT
TO SAVE TIME AND MONEY AND MAKE BETTER DECISIONS!**

PlanetDEM 30 Plus is a unique global elevation dataset perfect for many markets and applications, incl.:



Military/Defense

Mission planning systems, visualization & navigation solutions



GIS solutions

Planning, agriculture, etc.



Space/Aeronautics

Flight simulation, Orthorectification



Cartographic mapping

Web-mapping, mobile apps



Media

Broadcast & Weather graphic solutions



Energy

Oil & gas, mining

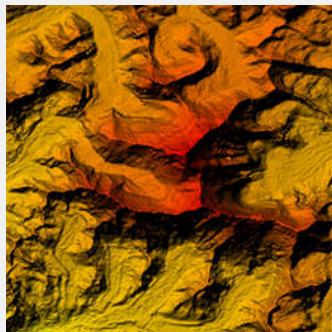
THEY TRUST US

- Agenium (STK, Luciad)
- Airbus Defence & Space
- Airbus Helicopters
- Ask GmbH (TriVis Weather Graphix)
- BRGM (French Geological Survey)
- ChyronHego (Metacast)
- CNES (French Space Agency)
- Diginext (Virtual Geo)
- ESA (European Space Agency)
- Meteo France
- MeteoGroup
- MetraWeather
- Planet/RapidEye
- RSA Cosmos
- Sogitec
- Xample (Air Navigation Pro)

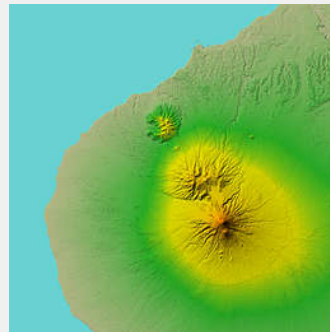
SPECIFICATIONS

Resolution	30m (1 Arc-Second per pixel) and 90m (3 Arc-Second per pixel)
Coverage options	Global, continental, country or custom areas (cost per sq km)
Sources	SRTM 30m and other source data (ASTER, cartographic, etc.)
Projection/Datum	Geographic WGS84
File format	GeoTIFF, DTED
File structure	5°x 5° tiles (GeoTIFF), 1° x 1° tiles (DTED)
Total data size	30m: 883 GB in GeoTIFF; 397 GB in DTED2 90m: 173 GB in GeoTIFF; 125 GB in DTED1

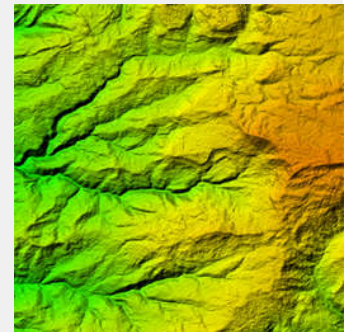
- » Available immediately in two resolutions: 30m and 90m
- » Different licensing models adapted to your projects



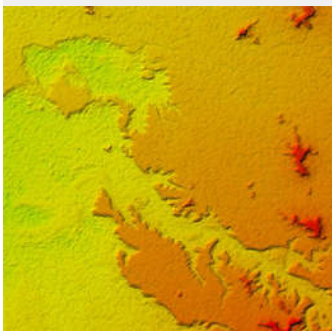
Mount Everest, Himalayas



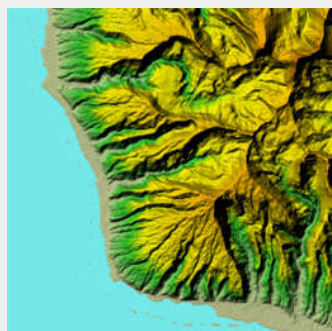
Mount Egmont, New Zealand



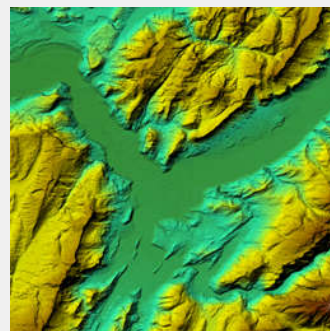
Lebanon



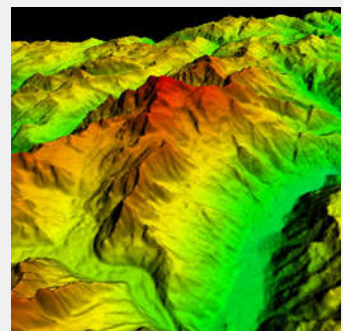
Algeria



Tahiti



Grenoble, France



Mont Blanc, Europe